



JOCAVI Acoustic
panels[®]
www.jocavi.net

Acoustic Perfectionism is Our Aim

BRIEF COMPANY PROFILE

Become acquainted with our company, our brands, the products we conceive and manufacture as well as with our objectives, overall guidelines and intervention areas.

JOCAVI® was born in 1992 as a manufacturer of acoustic panels. We are a Portuguese company specialised in developing and manufacturing acoustic treatment panels for the professional audio industry.

JOCAVI® presents acoustic treatment panels that blend well with any decoration, easily mounted on ceilings or walls.

The development and improvement of these panels were done with the help of computerised calculus and analysis, in order to determine their characteristics and optimise their practical application, thus ensuring the excellence of our products.

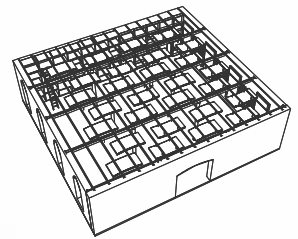
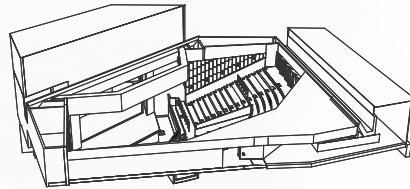
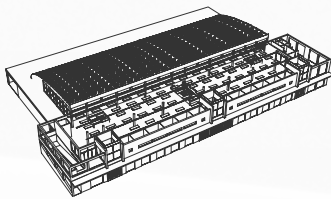
We always look for originality, technological innovation, durability, cost and promptness. We have therefore generated a vast organisational wealth because we share Quality with those who are quality-oriented.

The use of acoustic products in working environments, by taking into account the needs and the modern corporate images, is our passion.

Our company has available a varied and thorough offer of high quality products, which enable a wide range of applications. Our models offer to the designer a large variety of solutions. Several types of absorption and diffusion models deliver an excellent performance in the diverse areas of application. Our products offer new aesthetics, a cutting-edge attitude, efficiency, quality and customised design. Our acoustic products are prepared to a high standard, with skills acquired from good taste, in order to serve the high-end corporate world.

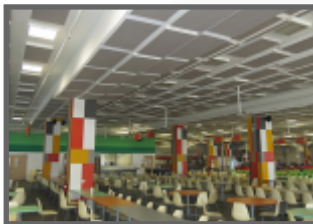
We are JOCAVI®, an INTERNATIONAL reference in the world of acoustics.

ALL APPLICATION AREAS



We have the solution for the most demanding ears, be it for **Auditoriums, Concert Halls, Audio Studios, Video Studios, Radios, TV's Stations, Cinemas, Sports Halls, Industrial Pavilions, Swimming Pools, Public Spaces, Commercial, Offices**, etc., even for your own Listening room at home.

JOCAVI® presents acoustic treatment panels which blend well with any decoration and are easily mounted on ceilings or walls.



OUR TASKS

The passion for Musical Acoustics has guided my life since I was a child. The taste for this matter with the tenacity to create and develop has been giving the market, under Jocaivi's name, numerous high quality acoustic solutions.

For over twenty years I have had the pleasure to make this journey that makes me feel accomplished and honored, with a work dedicated to those around me, my friends and coworkers.

JOCAVI® has now more than 100 different acoustic products on the market, catalogued, organized and available for the most complex and demanding

applications, as well as for the most practical and simple on the world of environmental acoustics. We are always improving.

Welcome to JOCAVI® world, a wide range of Acoustic Solutions.

Yours faithfully,

João Carlos Vieira
Founder and CEO

A FULL RANGE OF ACOUSTIC SOLUTIONS



CERAFLECTOR® / PLURA®
DIFFUSION PANEL

JOCAVI® ACOUSTIC PANELS

CERAFLECTOR CERAMIC



CERAFLECTOR GRP



PLURA

CERAFLECTOR®

- Average diffusion: **0.67/m²** [$>100\text{Hz}; <5\text{KHz}$].
- NRC: **0.22/m²** [$>100\text{Hz}; <5\text{KHz}$].
- Made of Porcelain or GRP
- Fire-resistance: M1 for porcelain / Bs1 for high-density GRP model.

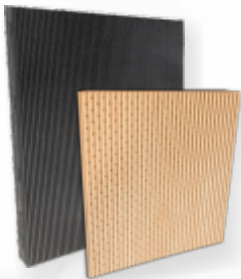
PLURA®

- Average diffusion: **0.67/m²** [$>100\text{Hz}; <5\text{KHz}$].
- NRC: **0.33/m²** [$>100\text{Hz}; <5\text{KHz}$].
- Manufactured with ABS.
- Fire-resistance: M1.



ADDSORB REV® / LEAKY FM®
ABSORBENT PANEL

JOCAVI® ACOUSTIC PANELS



ADDSORB REV



LEAKY FM

ADDSORB REV®

- NRC: **ADDREVR - 0.77/m² / ADDREVR -0.74/m²** [$>100\text{Hz}; <5\text{KHz}$].
- Standard and customised grooves and perforations.
- Fire-resistance: Coloured wood veneer - Class A and Wood finishing - Class C.
- 100% recyclable.

LEAKY FM®

- NRC: **LFM 0.86/m² / LFMB 0.82/m² / LFMC 0.80/m²**
LFM3D 0.74/m² / LFMT 0.93/m² / LFMD 0.93/m² [$>100\text{Hz}; <5\text{KHz}$].
- Uses 80% of recycled materials.
- Fire-resistance: M2.



MELLOWCLOUD® / LIGHTWALLTRAP®
ABSORBENT PANEL

JOCAVI® ACOUSTIC PANELS

MELLOWCLOUD ABS



MELLOWCLOUD DIF



LIGHTWALLTRAP

MELLOWCLOUD® ABS/DIF

- NRC: **MELABS - 0.89/m²** [$>100\text{Hz}; <5\text{KHz}$].
- Average diffusion: **MELDIF - 0.37/m²** [$>100\text{Hz}; <5\text{KHz}$].
- Standard dimensions: 200x120x8cm and 180x100x8cm.
- Fire-resistance: M1 and B1.

LIGHTWALLTRAP®

- NRC: **0.73/m²** [$>100\text{Hz}; <5\text{KHz}$].
- Different shapes and sizes.
- Uses 65% of recycled materials.
- Fire-resistance: M1.



OTHER AVAILABLE MODELS
TUNED ABSORPTION PANELS

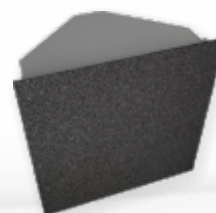
JOCAVI® ACOUSTIC PANELS



BASSCORNER®



BASSLAYER®



STAIDTREAT BXA®

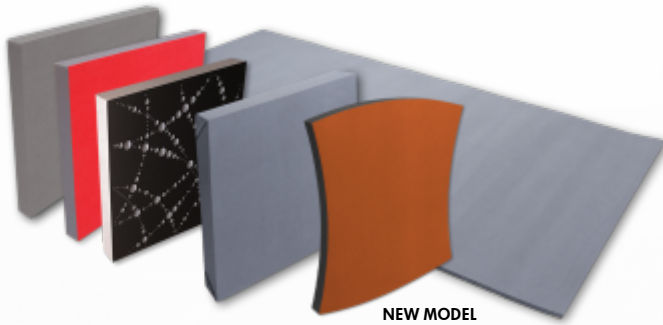


TUBABSORBER®



BASMEL®
ABSORBENT PANEL 

ATP® ACOUSTIC PANELS



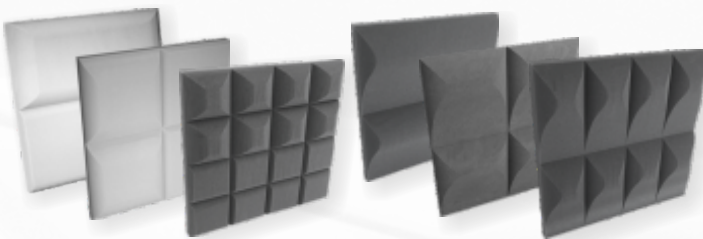
NEW MODEL

- NRC: **0.80/m²** (40mm), **0.54/m²** (20mm).
- Raw material: melamine resin or standard acoustic foam.
- **MELAMIN RESIN** - Flame resistance: Germany B1, France M1, GB class1, USA V0/HF1.
- Good thermal insulation properties humidity tolerance.
- Constant physical properties over a wide temperature range.
- Resistance to all organic solvents.
- **ACOUSTIC FOAM** - Self-extinguishable M1 fire-retardant foam.
- Package: 8 units.
- Mounting glue and **FABRIC ADHESIVE FINISHING TAPE** sold separately.
- **SELF-ADHESIVE** option available on request.



SEAFOAM® / SWELL®
ABSORBENT PANEL 

ATP® ACOUSTIC PANELS



SEAFOAM

SWELL

- SEAFOAM®**
- NRC: **0.80/m²** [$>100\text{Hz}; <5\text{KHz}$].
 - **MELAMIN RESIN** - Flame resistance: Germany B1, France M1, GB class1, USA V0/HF1.
 - **ACOUSTIC FOAM** - Self-extinguishable M1 fire-retardant foam.

- SWELL®**
- NRC: **0.90/m²** [$>100\text{Hz}; <5\text{KHz}$].
 - **MELAMIN RESIN** - Flame resistance: Germany B1, France M1, GB class1, USA V0/HF1.
 - **ACOUSTIC FOAM** - Self-extinguishable M1 fire-retardant foam.



COOKIE® / DECOART®
ABSORBENT PANEL 

ATP® ACOUSTIC PANELS

COOKIE

DECOART



VELVET FINISHING



- COOKIE®**
- NRC: **0.90/m²** [$>100\text{Hz}; <5\text{KHz}$].
 - **MELAMIN RESIN** - Flame resistance: Germany B1, France M1, GB class1, USA V0/HF1.
 - **ACOUSTIC FOAM** - Self-extinguishable M1 fire-retardant foam.

- DECOART®**
- NRC: **0.84/m²** [$>100\text{Hz}; <5\text{KHz}$].
 - New shape and design recommended for continuous surface treatment.
 - Standard Dimensions: 96x30x8cm.
 - **FINISHINGS AVAILABLE:** Regular Foam and the new **Velvety Finishing**



OTHER AVAILABLE MODELS
TUNED ABSORPTION PANELS 

ATP® ACOUSTIC PANELS



LF COSMOS®



LF CAMOU®



LF TONE®



BASSKEEPER ANGLE®



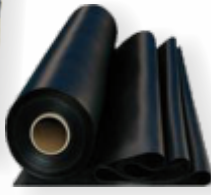
FLOATSHEET® / GROUTPAINT® / STILLNESS®
SOUNDPROOFING AND ANTI-VIBRATIC DAMPING MATERIALS

IN® INDUSTRIAL INSULATION

FLOATSHEET INS



FLOATSHEET VIB



GROUTPAINT



STILLNESS



FLOATSHEET® INS / VIB

- Noise and sound insulation layer. Anti-vibration layer with great mass.
- Good fire resistance, elasticity, flexibility and tensile strength.
- Supplied in rolls or plates, with or without adhesive.

GROUTPAINT®

- Application: by spraying, brush or roll. To adjust the viscosity we suggest added 0,3% to 0,5% water per kilogram.
- Excellent adhesive ability to aluminum and other metals.
- Water-based and easy to use and clean.

STILLNESS® I, II, III, IV

- Can enhance the sound insulation between **18** and **24 dB**.
- Reduces sound transmission loss property.
- Total thickness: from **23mm** to **46mm**.

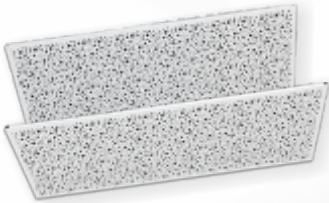
NEW BRAND



WALLPERF® / AIR BILLOW®
ABSORBENT PANEL [D]

IN® INDUSTRIAL INSULATION

WALLPERF



AIRBILLOW

WALLPERF®

- NRC: **0.94/m²** [$>100\text{Hz}$; $<5\text{KHz}$].
- For ceiling applications and with excellent fire-resistance.
- Made of metal lacquered plate and different raw absorbent materials inside.
- Good robustness and airborne noise control.

AIRBILLOW®

- NRC: **1.05/m²** [$>100\text{Hz}$; $<5\text{KHz}$].
- Several combinations, for ceiling applications with excellent fire-resistance.
- Suitable for areas with large space, e.g. stadiums, airports and bus stations, pavillions as well as for public or industrial facilities.

NEW BRAND



DYNAMICFLOW® / PLURA® / WOODFOIL®
PORTABLE DIFFUSION SHELLS [E]

AS® ACOUSTIC SHELLS



DYNAMICFLOW® AcSh®, WOODFOIL® AcSh® and **PLURA® AcSh®** removable acoustic shells are composed of four 120cm x 120cm modules which are set on a flight-case type box. This box is part of the basic structure of the shell itself and there is no need to store the box while the shell is being used. Two people are enough to install it on the stage floor.

This shell adapts to each orchestra according to the number of musicians, groups of instruments and the stage area by adjusting the quantity of modules to be used.

It is versatile since it allows several configurations in accordance with the musical formation, as well as the easy access of musicians and instruments and a quick assembly and disassembly.

This shell is easily carried on its wheeled box. When not in use, it is kept in storage in order not to interfere with the good functioning of the performance room.



EFFECTFUSER® / PLURA® / DYNAMICFLOW® / WOODFOIL®
FIXED DIFFUSION SHELLS [E]

ATP® ACOUSTIC SHELLS



The **EFFECTFUSER® AcSh®, DYNAMICFLOW® AcSh®, WOODFOIL® AcSh®** and the **PLURA® AcSh®** fixed acoustic shells consists of lateral background and ceiling modules. These elements enable several angulations among themselves, which are defined according to the degrees of incidence towards the audience.

These modules are fixed to the stage's ceiling with duralumin and steel cable structures. They are moved through a system of electric engines, which allow pre-programming some points on the most usual positions. When not in use, shells are gathered on the stage's ceiling and go completely unnoticed.

This type of study is available by our company and prepared through simulation of ray tracing, the only way to preview the objective. Therefore, we assure the homogeneous scattering levels of the acoustic energy and the subsequent increase of reverberation time in the room.



ECOiso SYSTEM® / ECOiso ABL®
SOUNDPROOFING AND ACOUSTIC TREATMENT

ECOiso® ECOLOGICAL PRODUCTS LINE



ECOiso SYSTEM



ECOiso ABL

ECOiso® SYSTEM

- Thermal, acoustic insulation, anti-vibration and acoustic absorbent.
- Renewable, 100% natural raw-material and fully recyclable.
- Fire Class: **B-s2, d0 - E1**
- Noise reduction coefficient (NRC): **0.78/m²**
- Level of sound insulation: **Rw 54 dB.**
- Excellent dimensional stability (even when subject to high thermal variations).

ECOiso® ABL

- 100% recycled and recyclable.
- Fire Class: **B-s2, d0 - E1**
- Noise reduction coefficient (NRC): **0.78/m²**
- Unlimited durability, no loss of features.
- Low energy consumption during the manufacturing process.



QUADCORK® / QUADCORK® OUTLINE
ABSORBENT PANEL

ECOiso® ECOLOGICAL PRODUCTS LINE



QUADCORK



QUADCORK OUTLINE

QUADCORK®

- NRC: **(0.42/m² - 40mm) (0.53 /m² - 60mm).**
- Level of sound insulation: **Rw 52 dB.**
- Fire class: Euroclass E - EN 13501-1.
- Thermal conductivity / Specific heat: 0.004W/mk.
- Natural industrial process (without additives).

QUADCORK® OUTLINE

- NRC: **(QOC100 - 0.70/m²) (QOF100 - 0.71 /m² - 60mm).**
- Thermal, acoustic and anti-vibration insulation material.
- Renewable and 100% natural raw-material and fully recyclable.
- No release of toxic gases.
- Unlimited durability, no loss of features.



ECOiso® SPL / ECOiso® NCF
SOUNDPROOFING AND ANTI-VIBRATION PRODUCTS

ECOiso® ECOLOGICAL PRODUCTS LINE

ECOiso SPL



ECOiso NCF



ECOiso® SPL

- 100% Cork - Natural Raw material - 100% recyclable.
- 110 Kg/m³ density and unlimited durability
- Excellent thermal and anti-vibrating properties.
- Applicable on walls, ceilings and floors as a revetment or as insulation material.
- Plate sizes: 1000x500mm; thickness, 10/20/40/60/80/100mm.

ECOiso® NCF

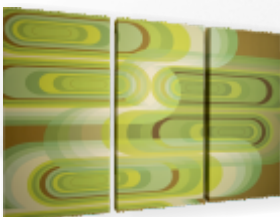
- Natural raw and recycled materials.
- Excellent anti-vibrate performance.
- Supplied in tiles, easy to install. Easily cut to adjust room dimensions.
- Provided in two sizes: 48x48cm or 96x48cm.
- Suitable for primary construction or retrofitting.



MELLOWALLTRAP® / ADDSORB®
PRINTED ON FABRIC AND PRINTED ON WOOD

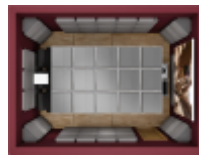
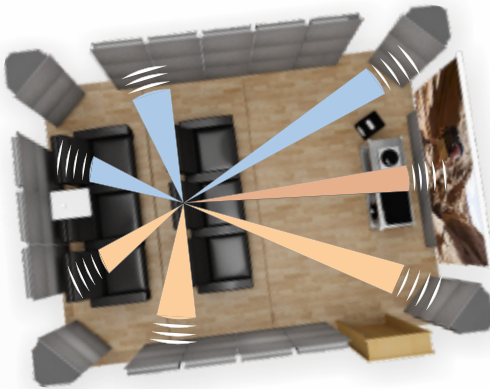
MOTIF® PRINTED IMAGE FINISHING

ON FABRIC



ON WOOD

- Printed on fabric or wood.
- Acoustically transparent textile and/or perforated wood.
- Same acoustic performance as the original models.
- Exclusive customized images guaranteed by our One of a Kind department.
- Fire security requirements (B1) for public use(fabric finishing).
- High-quality print, using CMYK colour system and resolution up to 1080 dpi.
- Custom-made by size and images.
- Large-scale seamless images.



ROOMS FROM
20 to 30 m²

KITBOX 03.A

Sabine: 0.27 sec

ABSORPTION COEFFICIENT

FREQUENCY	125 Hz	250 Hz	500 Hz	1 KHz	2 KHz	4 KHz
αS	0.27	0.23	0.28	0.28	0.26	0.27

Sabine: 0.27 sec

WHERE TO APPLY

Rooms with an area between: **20 and 30 square meters.**
Rooms with volumes between: **58 and 90 cubic meters.**
For use in small and medium-sized home-theatre rooms, home-studios, Hi-fi rooms or instrument rooms.

The **STAITREAT® KITBOX 03.A** (Active Speakers System), is an innovative modular acoustic treatment method, which combines with high quality performance speakers. The speakers are placed inside the absorbent boxes of the WBA /BXA models. This set of acoustics and public address devices is designed to aesthetically conceal acoustic treatment with speakers providing a good sound intelligibility, besides making technology imperceptible to eyesight.

This system was essentially planned for 7.1 and 5.1 home-theatres surround systems, but it is also advisable for conference rooms, restaurants and bars, public spaces and for background music or speech purposes. It is composed by the two-way loudspeaker mounted inside the acoustic panel and by a self-amplified Subwoofer to be placed on the floor of the room. It has been created for small and mid-sized home-cinema rooms. It is a discrete system that combines acoustic treatment and the embedded speakers. The approach consists on adjusting the number of the modules to the room dimensions.

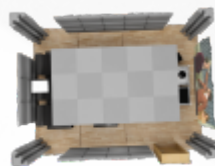
Surround sound is the idea of engaging a listener in sound, just like a movie theater. Sound is half of the importance of the entertainment experience and the speaker placement is essential to experiencing the true impact of movies and music.

A 7.1 surround system has seven discrete audio channels, Left, Right, Center, Left Surround, Right Surround, Left and Right Back, and of course, the Subwoofer.



KITBOX 03.A QUANTITIES

REFERENCE	PANELS	UNITS	DIFFUSOR	ABSORBENT	TUNED
BXA060	Staidtreat®BXA	10	—	—	✓
BXW060	Staidtreat®BXW	28	—	—	✓
WBA060	Staidtreat®WBA	26	—	✓	—
BXA060A	Staidtreat®BXA Active	02	—	✓	—
WBA060A	Staidtreat®WBA Active	06	—	✓	—



STANDARD

Sabine: 0.21 sec

ROOMS FROM
17 to 30 m²

EXCELLENCE

Sabine: 0.22 sec

ABSORPTION COEFFICIENT

FREQUENCY	125 Hz	250 Hz	500 Hz	1 KHz	2 KHz	4 KHz	RT60
● αS	0.58	0.36	0.24	0.21	0.23	0.22	0.22
● αS	0.60	0.38	0.25	0.21	0.22	0.21	0.21

Sabine: 0.22 sec / 0.21 sec

WHERE TO APPLY

Rooms with an area between: **17 and 30 square meters.**
Rooms with volumes between: **45 and 58 cubic meters.**
For use in medium-size home-theatre rooms, home-studios, Hi-Fi rooms, listening rooms, etc.

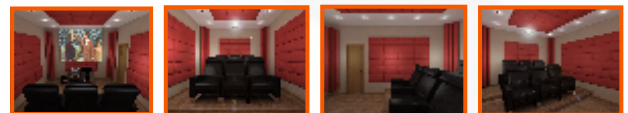
ATP® PACK 06 was developed by JOCAVI® to fulfil and achieve a compromise between aesthetics and acoustics in Home Cinemas and private Home Theatres applications.

ATP® PACK 06 is a new set of acoustic panels prepared for mid-size rooms and based on the room dimensions of previous **ATP® PACK 03**.

Despite the intentional non-inclusion of low frequency absorbent panels in this pack, the presence of this set of panels, helps to enhance, in the most real way, the sound produced by its system and to optimise the acoustic coupling between the listener and the speakers, while minimising the SBIR and the modal emphasis to produce a frequency response as flat as possible in the room.

As the others **ATP® PACKS**, **ATP® PACK 06** is available in two options: **Standard** and **Excellence**. The **Standard** is composed only by standard acoustic foam panels while the **Excellence** version is available with the same acoustic models but with our new finishing: velvety.

It is a very practical assembly kit and is provided with assembly instructions, as well as the glues and tools which are necessary to install the acoustic modules.



PACK QUANTITIES

REFERENCE	PANELS	UNITS	DIFFUSOR	ABSORBENT	TUNED
● SF2060	SEAFOAM SF2	60	—	✓	—
● T4S060	TRAP 40 S	16	—	✓	—

REFERENCE	PANELS	UNITS	DIFFUSOR	ABSORBENT	TUNED
● SF2060	SEAFOAM SF2	60	—	✓	—
● T4S060	TRAP 40 S	16	—	✓	—

SOME WORLDWIDE WORKS



Rehearsal Rooms



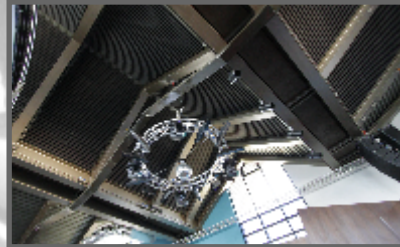
Acoustic Shells



Pavilions



Recording Studios



Concert Halls



Auditoriums



Night Clubs



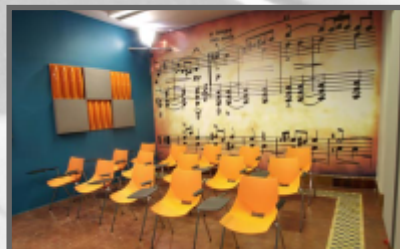
Radio Stations



Health Clubs



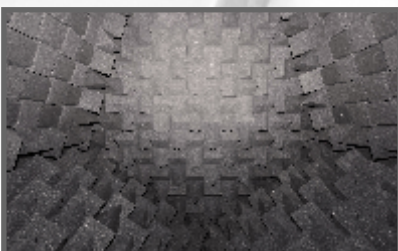
Home Theatre / Cinema



Class Rooms



Restaurants



Anechoic Chambers



Food Court



Mastering Studios



JOCAVI, Acoustic Panels, Ltd.
 Av. Pedro Álvares Cabral
 Centro Empresarial Sintra - Estoril V, Armazém B18
 2710 - 297 Sintra - Portugal

Phone +351 21 9243097 - Fax +351 21 9243098
www.jocavi.net - mail: info@jocavi.net
www.facebook.com/jocavi.net
<http://www.youtube.com/user/jocavigroup>